

Mission

Beyond East or West,
for all humanity.
家国天下，无问西东。

Vision

To be a school that upholds nobility, empowers both
teachers and students, and promotes harmony and joy.

Values

- Serving students by empowering teachers
- Teamwork and professionalism
- Harmony in diversity, flourishing as individuals

Our School

Ulink College of Shanghai (UCS) is an independent, private college preparatory school attended by Chinese students aged 15-19. UCS provides a diverse array of IGCSE, A Level, and IBDP subjects, complemented by a rich selection of co-curricular events and activities. UCS admission process is highly selective with compulsory placement tests and interviews conducted by its own faculty and staff. UCS academic year begins in early August and ends in early June with a one-month winter break in January or February depending on the time of the Chinese lunar new year.



2005

Founding year of
Ulink College of Shanghai



1st

1st Cambridge Center
in Eastern China



4

Ulink Campuses in China:
Shanghai, Suzhou,
Guangzhou, Beijing



ACCREDITED

By both CIE and IB



45

Number of courses offered in the IGCSE
and A Level program



100%

University placement rate



22

"Top in World" CIE outstanding
achievement awards in 2025



90+

Number of clubs and organizations
created and run by students



PDQ

The first A-Level school in China to
offer the Professional Development
Qualification programme to its faculty

Our Students

436 (A-level: 396 IB: 40)
Class of 2026 Size



1347
Students in Grade 9-11

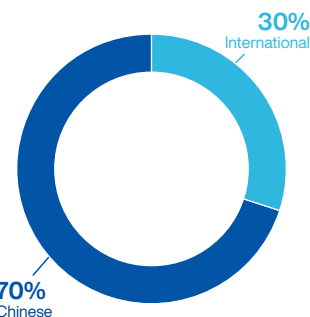
42%
Shanghai



58%
Non-Shanghai & International

- 1783: Total number of students
- 26: Number of provinces our students
come from
- 74.2%: Percentage of boarders

Our Faculty & Staff



70%
Chinese

30%
International

- 238: Total number of teachers
- 25: Number of nationalities our staff
represent
- 78% Holding master or above degree
- 7:1 Student-teacher ratio



UCS Graduation Requirements

Ulink College of Shanghai requires students to meet high academic and engagement standards in order to be eligible for graduation. In addition to obtaining a diploma in A Level or IBDP, students must maintain an attendance record of 95% or above, a satisfactory behavior record, active involvement in school activities for the final two years. Students must complete 30 hours of community service per academic year.

UCS Academic Awards & Conduct Awards

Principal's Awards: Each year, students attaining high academic performance are eligible for the Principal's Outstanding Achievement, Excellence, or Commendation Awards.

Faculty Awards: Each year, students achieving the highest score in a subject globally are eligible for the Faculty Excellence Award, while students achieving the highest score in a subject in China are eligible for the Faculty Commendation Award.

Conduct Awards: Each year, students demonstrating outstanding behavior are eligible for the Principal's Outstanding, Excellent, or Commendable Conduct Awards. Criteria for the awards can be provided upon request.

A Level Curriculum

UCS provides a wide range of IGCSE and A Level subjects using the Cambridge International Education (CIE) curricula. Students in Grade 9-10 may take 6-11 subjects across various disciplines, and then focus on 3-4 core subjects during their final two years. All students are required to participate in the physical education program.

Subject Groups	Grade 9-10	Grade 11	Grade 12
Creative and Professional	<ul style="list-style-type: none"> • IG Accounting* • IG Art & Design • IG Business Studies • IG Computer Science • IG Music • IG Drama 	<ul style="list-style-type: none"> • AS Accounting • AS Art & Design • AS Business • AS Computer Science • AS Music 	<ul style="list-style-type: none"> • A Level Accounting • A Level Art & Design • A Level Business • A Level Computer Science • A Level Music*
Humanities and Social Sciences	<ul style="list-style-type: none"> • IG Economics • IG Geography • IG History • IG Psychology* • IG Global Perspectives 	<ul style="list-style-type: none"> • AS Economics • AS Geography • AS History • AS Psychology • AS Sociology 	<ul style="list-style-type: none"> • A Level Economics • A Level Geography • A Level History • A Level Psychology • A Level Sociology
Language and literature	<ul style="list-style-type: none"> • IG English as a Second Language • IG First Language English • A Level First Language Chinese • Chinese Ancient Civilization* 	<ul style="list-style-type: none"> • IG English as a Second Language • IG First Language English • AS English Literature 	<ul style="list-style-type: none"> • English • A Level English Literature • English-Media • English-Drama
Mathematics	<ul style="list-style-type: none"> • IG Maths • AS Maths • A Level Maths 	<ul style="list-style-type: none"> • A Level Maths • AS Further Maths 	<ul style="list-style-type: none"> • A Level Further Maths
Sciences	<ul style="list-style-type: none"> • IG Biology • IG Physics • IG Chemistry 	<ul style="list-style-type: none"> • AS Biology • AS Physics • AS Chemistry 	<ul style="list-style-type: none"> • A Level Biology • A Level Physics • A Level Chemistry
General Education	Physical Education, University Guidance and Career Readiness, Student Wellbeing		

Note: Courses with * are new courses offered from August 2025 onwards.

CIE AS Exam Results Class of 2026 students

The table below shows the percentage of students attaining each grade for each subject at AS Level. These are calculated from the students who sat their exams and were awarded a grade by the exam board.

Code	Syllabus name	A Grade	A - B Grade	Number of student results
9706	ACCOUNTING	0%	75%	4
9479	ART AND DESIGN	50%	75%	4
9700	BIOLOGY	61%	79%	82
9609	BUSINESS	0%	75%	4
9701	CHEMISTRY	74%	88%	234
9618	COMPUTER SCIENCE	52%	68%	31
9708	ECONOMICS	61%	78%	185
9231	FURTHER MATHEMATICS	84%	96%	266
9696	GEOGRAPHY	23%	31%	13
9489	HISTORY	37%	89%	19
9695	LITERATURE IN ENGLISH	57%	86%	7
9693	MARINE SCIENCE	100%	100%	1
9709	MATHEMATICS	80%	93%	527
9483	MUSIC	0%	20%	5
9702	PHYSICS	84%	95%	327
9990	PSYCHOLOGY	74%	88%	34
9699	SOCIOLOGY	0%	0%	13

CIE A Level Exam Results Class of 2025 students

The table below shows the percentage of students attaining each grade for each subject at A Level. These are calculated from the students who sat their exams and were awarded a grade by the exam board.

Code	Syllabus name	A* Grade	A* - B Grade	Number of student results
9706	ACCOUNTING	0%	0%	0
9479	ART AND DESIGN	0%	33%	3
9700	BIOLOGY	32%	84%	37
9609	BUSINESS	0%	0%	2
9701	CHEMISTRY	50%	94%	121
9868	CHINESE LANGUAGE AND LITERATURE	46%	100%	246
9618	COMPUTER SCIENCE	44%	94%	18
9708	ECONOMICS	44%	88%	85
9231	FURTHER MATHEMATICS	52%	96%	168
9696	GEOGRAPHY	33%	83%	6
9489	HISTORY	0%	100%	5
9695	LITERATURE IN ENGLISH	0%	50%	2
9709	MATHEMATICS	50%	93%	486
9702	PHYSICS	47%	92%	198
9990	PSYCHOLOGY	39%	83%	23
9699	SOCIOLOGY	0%	75%	8

Grading Scale and Reporting

UCS computes an unweighted grade point average for students of Class of 2025 on the basis of internal assessments at the end of each semester and academic year. The GPA includes all courses taken at UCS.

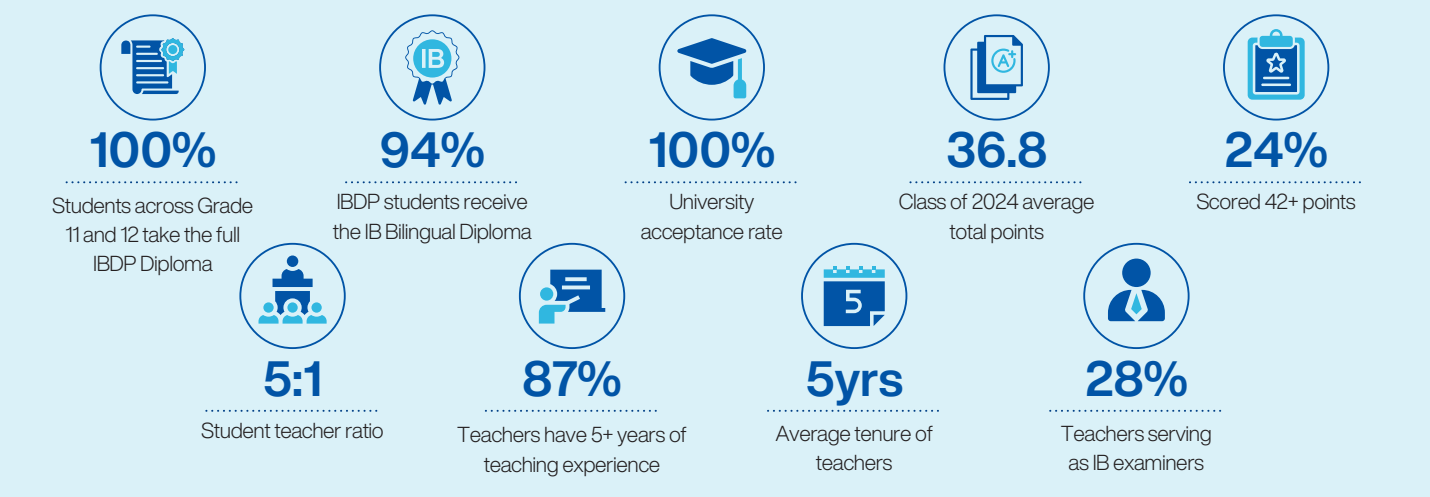
Marks (%)	Grade
90-100	A*
80-89	A
75-79	B*
70-74	B
65-69	C*
60-64	C

Marks (%)	Grade
55-59	D*
50-54	D
45-49	E*
40-44	E
0-39	U

Note: UCS will stop providing Grade Point Average (GPA) for students starting with class of 2026.

Ulink College of Shanghai (UCS) has been an authorized IB World School since 2018. The IB Division currently enrolls 148 students and offers a structured three-year educational pathway. Students begin with the Pre-IB curriculum in Grade 10 and advance to the two-year International Baccalaureate Diploma Programme (IBDP) in Grades 11 and 12.

Guided by the IB philosophy, we are committed to developing critical thinkers who engage authentically with diverse global perspectives. Our educational approach aims to nurture empathetic individuals with strong self-management skills, clear leadership potential, and a foundation for lifelong learning. We firmly believe that deep learning and personal growth extend beyond the classroom — and that this journey of development is shared not only by our students, but also by our dedicated faculty and staff.



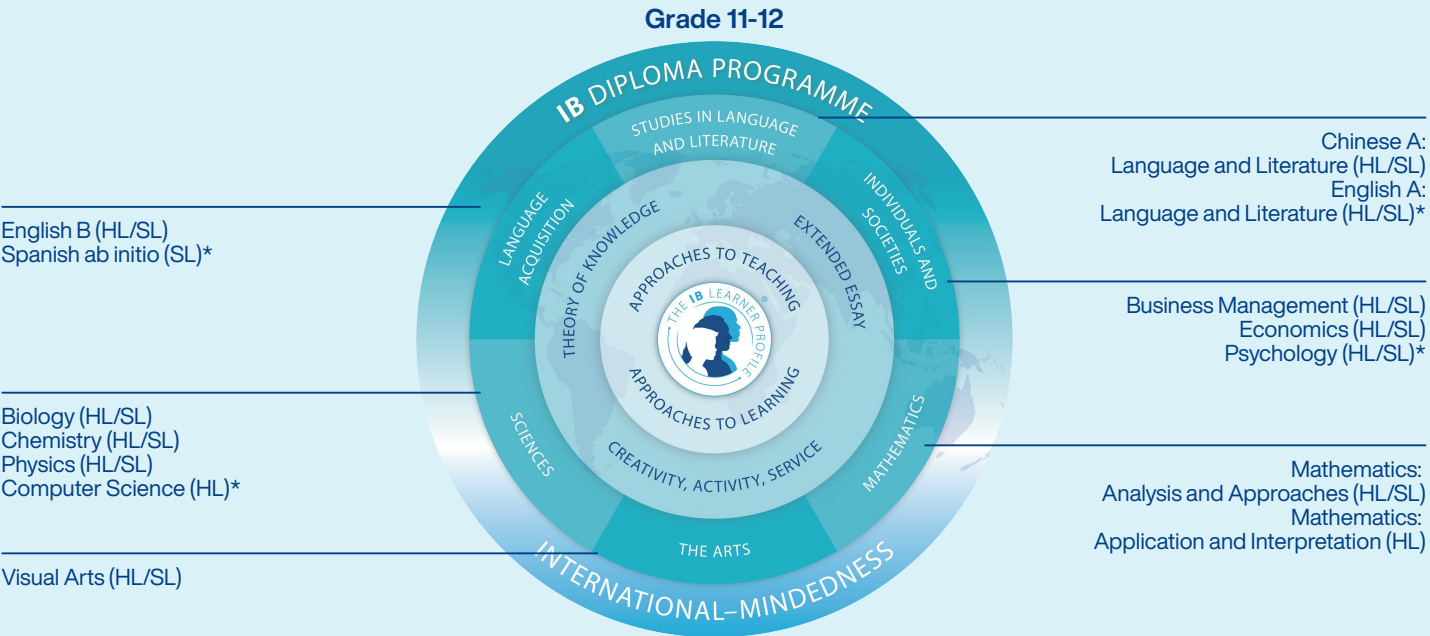
Ulink IB Curriculum

At Ulink IB, students are responsible for completing the Pre-IB and IBDP, and meeting the standards of school-based courses that focus on Physical Education, Character Education, and Community Service.

- Pre-IB (Year 10) is a school-based curriculum
 - IBDP (Year 11-12) is the IB Diploma Programme
 - Grades are determined based on the official IB grading rubrics
- Students receive number grades of 1-7 in their IB courses
 - We do not rank students or calculate a GPA

Grade 10 (Preparatory Year)			
Compulsory subjects	Chinese	Elective subjects	Business Management
	English		Economics
	Mathematics		Psychology*
	Drama		Biology
	Physical Education		Chemistry
	Character Education		Physics
	Creativity, Activity, Service		Computer Science*
	Theory of Knowledge		Visual Arts

*Subjects offered from August 2024 onwards
Note about IB transcript: UCS IB does not rank its students or calculate a GPA.



HISTORICAL UNIVERSITY ACCEPTANCES



Academy of Art University
American University
Arizona State University
Auburn University
Ball State University
Bard College
Barnard College
Baylor University
Bentley University
Berklee College of Music
Binghamton University
Boston University
Brandeis University
Bryn Mawr College
California College of the Arts
California State University, Fullerton
California State University, Long Beach
California State University, Northridge
Carleton College
Carnegie Mellon University
Case Western Reserve University
Claremont Colleges
Claremont McKenna College
Clark University
Clemson University
Colgate University
College of William & Mary
Colorado College
Columbia University
Cornell University
DePauw University
Diablo Valley College

Dickinson College
DigiPen Institute of Technology
Drexel University
Emerson College
Emory University
Fashion Institute of Technology
Fordham University
Franklin and Marshall College
George Washington University
Georgia Institute of Technology
Grinnell College
Hampshire College
Hobart and William Smith Colleges
Hollins University
Indiana University Bloomington
Iowa State University
Johns Hopkins University
Johnson and Wales University
Lake Forest College
Lawrence University
Lehigh University
Lincoln University
Loyola Marymount University
Macalester College
Maryland Institute College of Art
Michigan State University
Middlebury College
Mount Holyoke College
New York University
Oberlin College
Occidental College
Ohio State University

Otis College of Art and Design
Pace University
Parsons School of Design
Penn State Harrisburg
Pennsylvania State University
Pitzer College
Pratt Institute
Purdue University
Reed College
Rensselaer Polytechnic Institute
Rhode Island School of Design
Rice University
Ringling College of Art and Design
Rochester Institute of Technology
Rose-Hulman Institute of Technology
Rutgers University
Sacred Heart University
Saint Louis University
Santa Clara University
Sarah Lawrence College
Savannah College of Art and Design
School of Visual Arts
Smith College
Southern California Institute of Architecture
St. John's College
St. Olaf College
State University of New York
Suffolk University
SUNY Binghamton University
SUNY Stony Brook University
SUNY University at Buffalo

Syracuse University
Tennessee Technological University
Tufts University
Tulane University
Union College
University of California, Berkeley
University of California, Davis
University of California, Irvine
University of California, Los Angeles
University of California, Merced
University of California, Riverside
University of California, San Diego
University of California, Santa Barbara
University of California, Santa Cruz
University of Colorado Boulder
University of Connecticut
University of Delaware
University of Denver
University of Florida
University of Georgia
University of Idaho
University of Illinois Urbana-Champaign
University of Iowa
University of Louisiana at Lafayette
University of Maryland
University of Massachusetts Amherst
University of Massachusetts Boston
University of Massachusetts Dartmouth
University of Miami
University of Minnesota Twin Cities
University of Missouri
University of Montana

University of North Carolina at Chapel Hill
University of Notre Dame
University of North Georgia
University of Oregon
University of Pittsburgh
University of Richmond
University of Rochester
University of San Francisco
University of South Carolina
University of Southern California
University of Tennessee
University of Texas at Austin
University of Toledo
University of Tulsa
University of Virginia
University of Washington, Seattle
University of Wisconsin-Madison
Vanderbilt University
Vassar College
Villanova University
Virginia Tech
Wake Forest University
Washington State University
Washington University in St. Louis
Wellesley College
Wesleyan College
Wesleyan University
Williams College
Worcester Polytechnic Institute



Aberystwyth University
Architectural Association School of Architecture
Arts University Bournemouth
Bayes Business School, City, University of London
Bellerbys College
Birmingham City University
Brunel University London
Cardiff University
Cass Business School, University of London
Central Saint Martins, University of the Arts London
City, University of London
Coventry University
Durham University
Glasgow School of Art
Goldsmiths, University of London
Heriot-Watt University
Imperial College London
Keele University
King's College London
Kingston University
Lancaster University
Leeds Beckett University
London College of Communication
London School of Economics and Political Science
Loughborough University
Newcastle University
Northumbria University
Nottingham Trent University
Queen Mary University of London
Queen's University Belfast
Royal Conservatoire of Scotland
Royal Holloway, University of London
Royal Veterinary College
School of Oriental and African Studies,

University of London
St Andrews Cambridge College
Swansea University
Teesside University
University College London
University for the Creative Arts
University of Bath
University of Birmingham
University of Bristol
University of Cambridge
University of East Anglia
University of Edinburgh
University of Essex
University of Exeter
University of Glasgow
University of Hertfordshire
University of Hull
University of Kent
University of Leeds
University of Leicester
University of Lincoln
University of Liverpool
University of Manchester
University of Nottingham
University of Oxford
University of Plymouth
University of Reading
University of Roehampton
University of Salford
University of Sheffield
University of Southampton
University of St Andrews
University of Strathclyde
University of Surrey
University of Sussex
University of the Arts London
University of Warwick
University of Westminster
University of York



Carleton University
Columbia College
Columbia International College
Concordia University
Dalhousie University
Langara College
McGill University
McMaster University
Queen's University
Simon Fraser University
University of Alberta
University of British Columbia
University of Calgary
University of Manitoba
University of Ottawa
University of Toronto
University of Victoria
University of Waterloo
University of Windsor
Vancouver Island University
Western University



Australian National University
Curtin University
Griffith University
Macquarie University
Monash University
Royal Melbourne Institute of Technology
University of Melbourne
University of New South Wales
University of South Australia
University of Technology Sydney
The University of Queensland
The University of Sydney



Cesar Ritz Colleges Switzerland
École Hôtelière de Lausanne
Glon Institute of Higher Education
Les Roches International School of Hotel Management
Swiss Federal Institute of Technology Zurich
Swiss Hotel Management School



ESSEC Business School
Sciences Po (Institut d'Études Politiques de Paris)



Constructor University (formerly Jacobs University Bremen)



City University of Hong Kong
Hang Seng University of Hong Kong
The Chinese University of Hong Kong
The Education University of Hong Kong
The Hong Kong Polytechnic University
The University of Hong Kong



Macau University of Science and Technology



University of Amsterdam



University College Dublin



Chuo University
Waseda University



Nanyang Technological University



Istituto Marangoni



Massey University

Contact Information

Address: 559 South Laiting Road, Songjiang, Shanghai, China

Zip Code: 201615

Phone: (+8621) 3373 7900

Website: www.ulink.cn

Xun'an Liang

Principal
principaloffice@ulink.cn
Jenny Li
Executive Principal
Deputy Principal & Head of Class of 2026
jenny.li@ulink.cn
Shane Johnschwager
Deputy Principal of Academic Development
shane.johnschwager@ulink.cn

Jim Zhang

Deputy Principal of Academic Development
jim.zhang@ulink.cn
Miranda Lin
Head of IB Program
miranda.lin@ulink.cn
Bailey Wu
Head of Student Guidance Office
bailey.wu@ulink.cn

Leo Chen

Senior Counselor
leo.chen@ulink.cn
Olivia Yang
Counselor
olivia.yang@ulink.cn
Catie Zhang
Counselor
catie.zhang@ulink.cn
Joey Huang
Counselor
joey.huang@ulink.cn

Kiki Shao

Counselor
kiki.shao@ulink.cn
Suzie Lin
Counselor
suzie.lin@ulink.cn
Aria Cheng
Counselor
aria.cheng@ulink.cn
Candice Chen
Counselor
candice.chen@ulink.cn

Lydia Xue

Counselor
lydia.xue@ulink.cn
Fang Hu
Counselor
fang.hu@ulink.cn
Yuri Li
Counselor
yuri.li@ulink.cn
Rebecca Yang
Counselor
rebecca.yang@ulink.cn

Elisa Pan

Counselor
elisa.pan@ulink.cn
Leah Xue
Counselor
leah.xue@ulink.cn
Katrina Shen
Counselor
katrina.shen@ulink.cn